



Periphilin 1 Polyclonal Antibody

Catalog No	YP-Ab-03169
Isotype	IgG
Reactivity	Human;Mouse
Applications	WB;IHC;IF;ELISA
Gene Name	PPHLN1
Protein Name	Periphilin-1
Immunogen	The antiserum was produced against synthesized peptide derived from human PPHLN. AA range:71-120
Specificity	Periphilin 1 Polyclonal Antibody detects endogenous levels of Periphilin 1 protein.
Formulation	Liquid in PBS containing 50% glycerol, 0.5% BSA and 0.02% sodium azide.
Source	Polyclonal, Rabbit,IgG
Purification	The antibody was affinity-purified from rabbit antiserum by affinity-chromatography using epitope-specific immunogen.
Dilution	WB: 1/500 - 1/2000. IHC: 1/100 - 1/300. ELISA: 1/5000.. IF 1:50-200
Concentration	1 mg/ml
Purity	≥90%
Storage Stability	-20°C/1 year
Synonyms	PPHLN1; HSPC206; HSPC232; Periphilin-1; Gastric cancer antigen Ga50
Observed Band	53kD
Cell Pathway	Nucleus . Cytoplasm . Chromosome . In undifferentiated keratinocytes expressed in speckle-type nuclear granules and at the nuclear membrane, but in the differentiated keratinocytes colocalized with periplakin at the cell periphery and at cell-cell junctions (PubMed:12853457). Localizes to chromatin (PubMed:26022416). .
Tissue Specificity	Ubiquitous.
Function	function:Involved in epithelial differentiation and contributes to epidermal integrity and barrier formation.,PTM:Substrate of transglutaminase (in vitro).,subcellular location:In undifferentiated keratinocytes expressed in speckle-type nuclear granules and at the nuclear membrane, but in the differentiated keratinocytes colocalized with periplakin at the cell periphery and at cell-cell junctions.,subunit:Homodimer. Interacts with PPL.,tissue specificity:Ubiquitous.,
Background	The protein encoded by this gene is one of the several proteins that become sequentially incorporated into the cornified cell envelope during the terminal differentiation of keratinocyte at the outer layers of epidermis. This protein interacts with periplakin, which is known as a precursor of the cornified cell envelope. The cellular localization pattern and insolubility of this protein suggest



that it may play a role in epithelial differentiation and contribute to epidermal integrity and barrier formation. Multiple alternatively spliced transcript variants encoding distinct isoforms have been observed. [provided by RefSeq, Jul 2008],

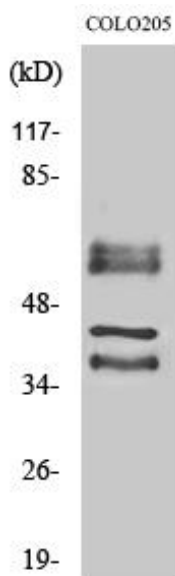
matters needing attention

Avoid repeated freezing and thawing!

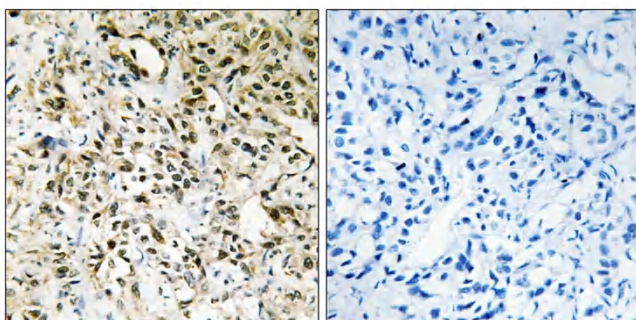
Usage suggestions

This product can be used in immunological reaction related experiments. For more information, please consult technical personnel.

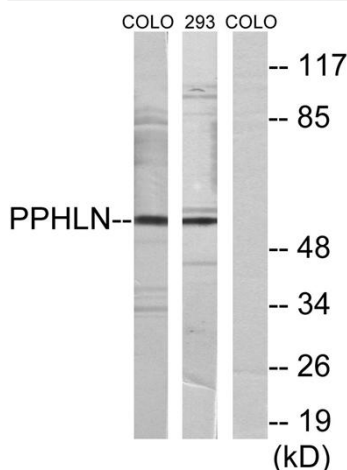
Products Images



Western Blot analysis of various cells using Periphilin 1 Polyclonal Antibody



Immunohistochemistry analysis of paraffin-embedded human liver carcinoma tissue, using PPHLN Antibody. The picture on the right is blocked with the synthesized peptide.



Western blot analysis of lysates from COLO and 293 cells, using PPHLN Antibody. The lane on the right is blocked with the synthesized peptide.